

# Bellaire Fire Department

---

DEACON TITTEL

FIRE CHIEF/EMC

DAVIS FARQUHAR

ASST. CHIEF /FIRE MARSHAL

A decorative horizontal bar at the bottom of the page, consisting of a thin light green line on top and a thick dark green line below it.

---

# HISTORY

A decorative horizontal bar at the bottom of the page, consisting of a thin light green line above a thicker dark green line.

# Bellaire Fire Department

---

On September 29, 1931 the city passed an ordinance, creating a Fire Marshal Position and a Fire Prevention Board

Lute Anderson – First Fire Marshal

Mrs. E. J. Owens, Lute Anderson, and Clarence Anderson—  
Fire Prevention Board



# Bellaire Fire Department

---

Bellaire Community Club was formed and started urging City Council to buy a fire truck and form a volunteer fire department

December 13, 1932 a 1926 Pierce Arrow Model 81 Touring Car was purchased by the City for \$85.00

Additional \$600.00 was put into the conversion and by May of 1933 the first fire truck went into operation



# Bellaire Fire Department

This truck was equipped with 1 inch rubber fire hose supplied with 2 – soda and acid chemical tanks



1933—First Fire truck with Clarence Anderson at the wheel. Others in the photo are left to right, Lute Anderson, Mr. Mims, J. H. Bohmfalk, Anderson, W. P. Long, Mrs. Leon Rosner, Earl Menefee and Edward Teas, Sr. Building in back is Gem Electric Co. and the Bellaire Ice and Water Plant.

# Bellaire Fire Department

---

The department also acquired a 500 gallon water tank that was placed on a trailer and towed to the fire. This was called the “floating fire plug.”

It was supplied with 1 ½ inch cotton fire hose for fire suppression efforts.

The department also had the capabilities of siphoning water from ditches if it happened to be a wet day.



# Bellaire Fire Department

---

Mayor Bohmfalk proclaimed the week of September 26, 1933 as Fire Prevention Week. This was the first Fire Prevention week for the city

Fire Prevention week is now recognize as the first week in October, nation wide.




# Bellaire Fire Department

---

The Fire Truck that the city used for operations was stationed at the corner of Bissonnet and S. Rice where the **Volvo shop** and the small strip center is now.

The citizens that participated in any type of emergency activity were alerted by a fire siren that was located on top of a forty foot tower.

When a fire occurred the citizens would call Leon Rosner's home (which used to be located across from the fire station) and she would press a button to set off the fire siren to alert all.

A solid dark green horizontal bar spanning the width of the slide, located at the bottom.



# Bellaire Fire Department

---

The department was organized and became official in May of 1935. It took two attempts to organize a structured department.

The first volunteer staff consisted of 18 members

G.H. Miles was elected as Bellaire's first Volunteer Fire Chief

W.A. Erdman was the first paid firefighter for the city.

A solid dark green horizontal bar spanning the width of the slide, located at the bottom.

# Bellaire Fire Department

---

In 1936, the city purchased the water plant from Clarence Anderson, along with the plant, land was purchased to relocate public works and the fire station.

The location on the new facilities was a Jessamine and Rice Avenue (where the Police Department is currently located).

A small house was also built for the paid firefighters.

# Bellaire Fire Department

---

March 22, 1938 the city accepted delivery of its first true Fire Truck, that day the city was designated as a fire district

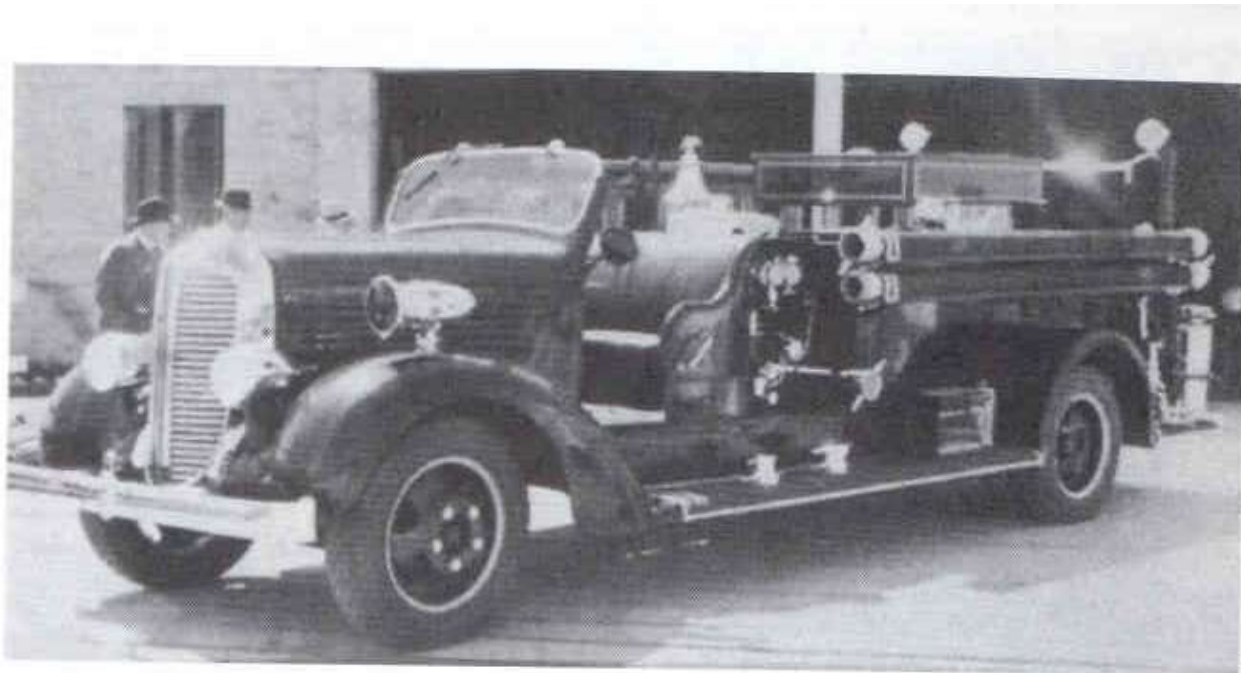


Volunteer Fire Department

Back row: left to right: Jimmie Dement, Bill Lowery, Casey Vanderheider, Jack Horn, Allen Rosenberger, Harold Weinzell, Grant Webster, Billy Stallworth, W. E. Frazier, M. W. Oliver, Joe Genetake, M. S. Bickel, Louis M. Taub.  
Front row: Andrew B. Seward, Sr., George Ross, Sinclair Wells, Rev. E. Frank Lothery, J. W. Holland, Mayor "Abe" Zindler, G. H. Miles, Tom Long, Jack Lawler, Frank J. Weinzell, B. C. Ely. In very front, Andy Seward, Jr., Mascot.

# Bellaire Fire Department

---



First pumper—1938. Men in back, left to right, Mayor Zindler, Bob Turrentine

# Bellaire Fire Department

---

By 1945, the city of Bellaire started to thrive. With a population of 1600 citizens and approximately 600 homes

The business district starting building as well.

The department was in a stable condition with 2 good trucks, 27 members, and steadily making improvements.

# Bellaire Fire Department

---

On October 15, 1952, the Bellaire Volunteer Fire Department officially became a paid department.

J.F. Guerdon was the Acting Volunteer Fire Chief.

# Bellaire Fire Department

---

James H. Lehmann took over as Volunteer Fire Chief shortly after.

W.B. Willis was Bellaire Fire Department's first Paid Fire Chief. 1952 – 1953

Glenn O Hutchins appointed Acting Fire Chief in 1953. Also was appointed Fire Chief in 1954

Only had 4 paid firefighters until 1954 (drivers)



# Bellaire Fire Department

---

Every year after 1954, the city would hire one if not two firefighters until the staffing of 18 firefighters was met.

1955 The department built a new station at Jessamine and S. Rice, our current location.

It cost the city \$162,000 for the land, building, and fixtures.





# Bellaire Fire Department

---

Along with the progressive movement the city created a position of a Full Time Fire Marshal and became part of the Bellaire Engineering and Inspection Department in November of 1963.

By 1969, the department worked in two different shifts with one man on a swing shift.

---

# Current



# Bellaire Fire Station

---



# Staffing

---

21 Career Firefighters

- 3 Shifts
- 48/96

2 Administration

- Asst. Fire Chief / Fire Marshal
- Fire Chief

5 Volunteers

# Staffing

---

## Dual certified staff

- Firefighter/Paramedics
  - 468 Hour Fire Coursework, with 150 hours of EMT Coursework
- How to become a Paramedic
  - 3 Semesters of College Course work equals to 1250 hours
- Continuing Education
  - Firefighter 18 Basic + 2 hrs. per certified discipline.
  - Paramedic 144 (Every 4 Years)


# Emergency Responses

---

## EMS Responses

- EMD Certified Dispatch Center
- MICU Capabilities

## Fire Responses

- Average 3 a year
  - Automatic Aide with West U/Southside Place
  - Mutual Aid with City of Houston
- 
- A solid dark green horizontal bar spanning the width of the slide, located at the bottom.

# EMS Response Breakdown

---

Medical

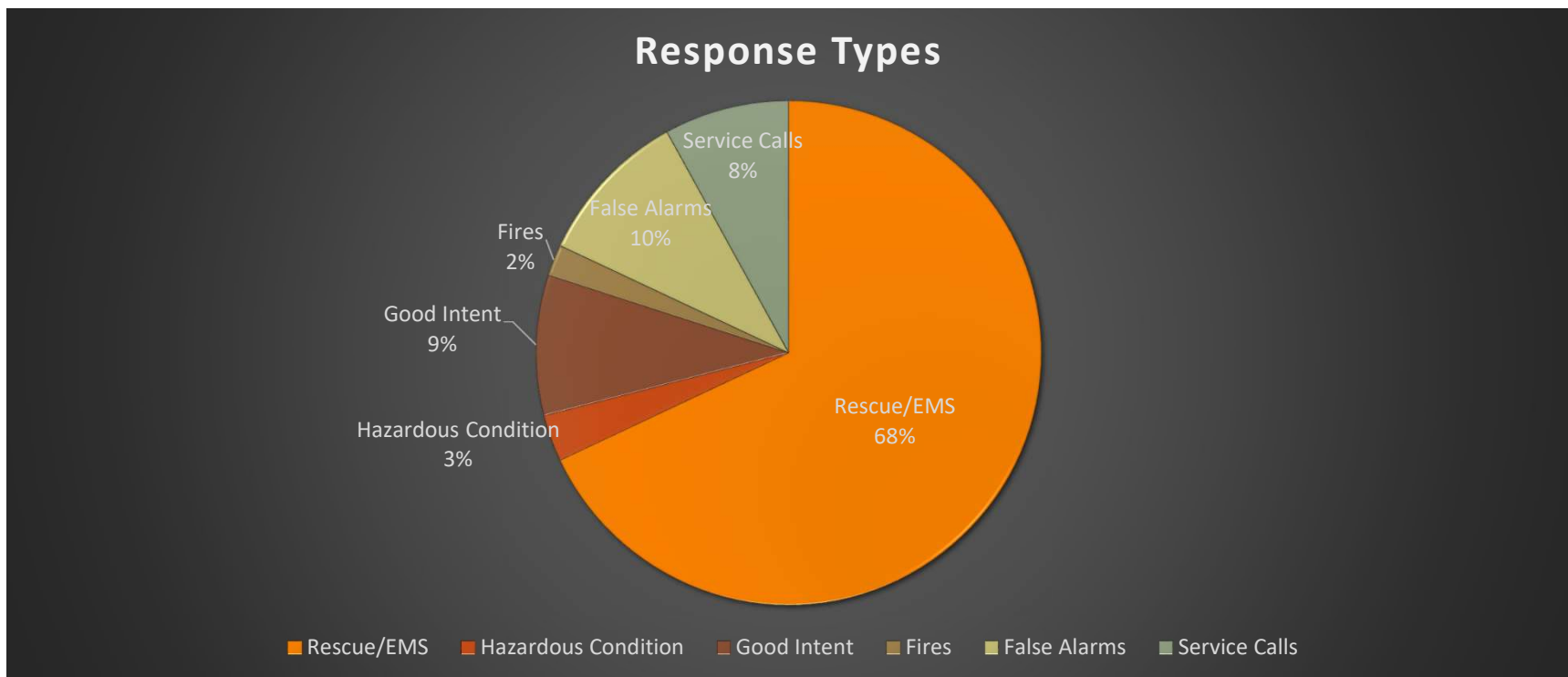
Trauma

Service Calls

False Alarms

Motor Vehicle  
Collisions

# Fire Response Breakdown







# Bellaire Fire Department

---



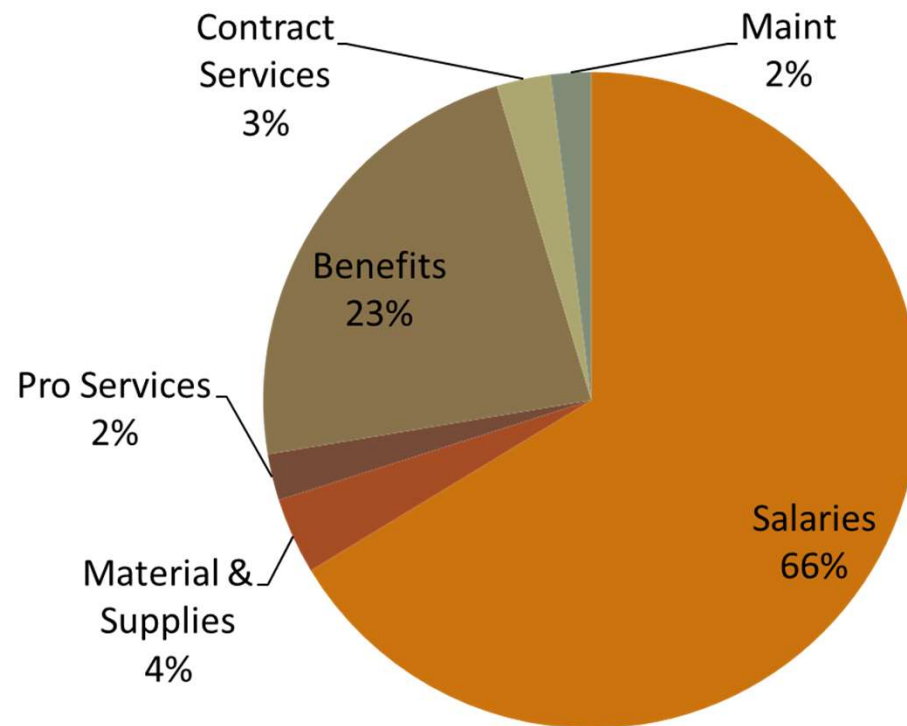
# Bellaire Fire Department

---



# How all this is paid for

---





---

# Specialized Areas

A decorative horizontal bar at the bottom of the slide, consisting of a thin light green line above a thicker dark green line.

# Technical Teams

---

## Certified Tactical Medics

- Support Bellaire PD's SRT
- All Staff is certified in TECC

## Swiftwater/Floodwater Rescues

- 10 person team
  - 10 – Swiftwater/Floodwater Tech 1
  - 5 – Swiftwater/Floodwater Tech 2
  - 10 – Boat Operators



## Tactical Emergency Casualty Care



Swiftwater / Flood Water Rescue





---

# Prevention





## Fire Prevention – Show and Tell



A word cloud centered around the theme of emergency management. The words are arranged in a roughly rectangular shape, with the largest words, 'EMERGENCY' and 'MANAGEMENT', dominating the center. Other words are scattered around them, some horizontal and some at angles. The colors are primarily shades of orange, brown, and red, with some black text for smaller words. The background is white, and there is a solid green horizontal bar at the bottom.

**EMERGENCY**  
**MANAGEMENT**

PROCESS  
PREVENTION  
MITIGATION  
GOVERNMENT  
RESPONSIBLE  
MANAGER  
RESPOND  
STAKEHOLDERS  
LOCAL  
RESPONDER  
TEAM  
ASSESSMENT  
AFFECT  
PART  
RELIEF  
SAFETY  
PHASE  
EVENT  
FEDERAL  
NATURAL  
SHELTER  
STRUCTURAL  
TRAINED  
SEISMIC  
NATIONAL  
DEFINED  
IDENTIFICATION  
RESCUE  
INFRASTRUCTURE  
BEDROLL  
RECOVERY  
PERSONAL  
PRIVATE  
INTEGRATED  
SPECIFIC  
REDUCTION  
EFFORT  
PROTECTION  
TOOL  
POPULATION  
INFORMATION  
RISK  
RELATED  
LEGISLATION  
COMMUNICATION  
STATE  
DISASTER  
EMERGENCY  
ARRANGEMENTS  
PREPAREDNESS  
CONTINUITY  
VOLUNTEER  
PUBLIC  
MAINSTREAM  
COORDINATION  
PROPERTY  
HAZARD  
AREA  
VOLUNTEERS  
DEVELOPMENT  
RESOURCES  
ACTION  
OPERATION  
IMPLEMENTATION  
SECURITY  
SUPPLY  
PRINCIPLES  
ORGANIZATION  
ENFORCEMENT

# Challenges

---

Small City with Big City Opportunities

Increasing Call Volume

