

Bellaire Citizens Academy

PUBLIC WORKS DEPARTMENT

Bellaire Citizens Academy



Public Works Department

What do we do?

Maintain, Operate and Construct (Public Infrastructure)

- Distribution & Collections
- Production & Treatment
- Streets & Drainage
- Solid Waste
- Public Works/CIP Inspections

Public Works Department

Points of Interest:

Public Works (FTE's) = 38

- Solid Waste = 15
- Distribution & Collections= 9
- Production and Treatment= 4
- Streets & Drainage= 5
- Administrative= 5

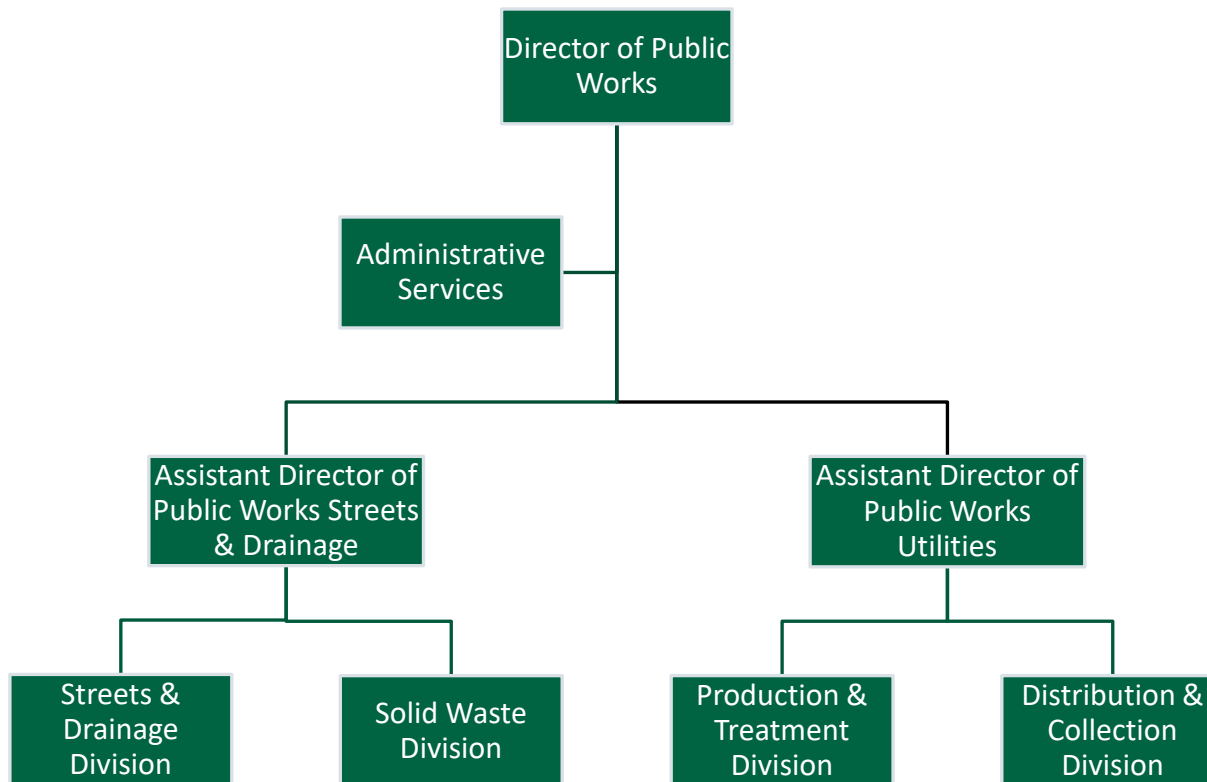
Enterprise:

- Solid Waste = 22% (\$1.7M)
- Wastewater = 22% (\$1.6M)
- Water = 54% (3.8M)

Enterprise Funds:

- Materials & Supplies = 8% (\$713k)
- Personnel = 32% (\$2.3M)
- Maintenance = 8% (\$694k)
- Contracts = 7% (\$937k)
- Water = 39% (\$2.3M)
- Other = 5% (337k)

Bellaire Citizens Academy



Bellaire Citizens Academy

Water:

Production

(Surface/Ground)

- Central WP (Ave. B)
 - Feld Park WP (Glenmont)
- = 2.0 MGD

(Ground)

- Renwick
- = 1.6 MGD

Total: 3.6 MGD Average

Distribution

- $\frac{3}{4}$ " to 16" waterlines
- 73 miles of waterlines
- 760 Fire Hydrants



190 gal./day per person at
pop. of 18,090

Bellaire Citizens Academy

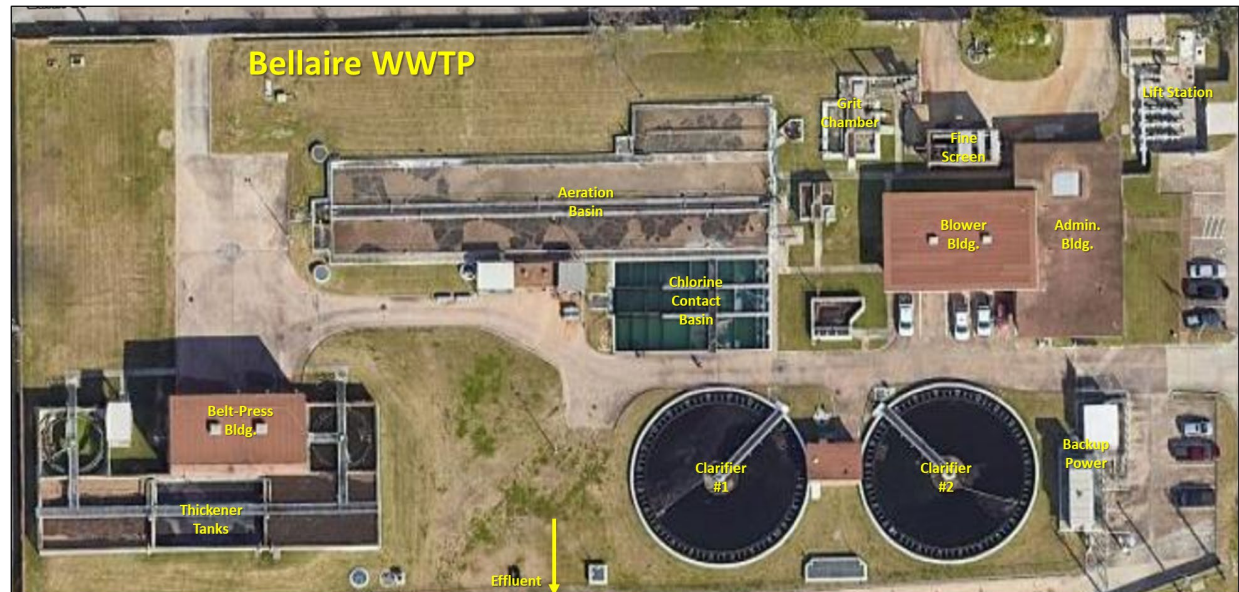
Wastewater:

Collections

- 2" to 24" sewer lines
- 70 miles of sanitary sewer lines
- Three (3) Lift Stations
 - Rice Lift Station
 - Bellaire Lift Station
 - Wendell Lift Station

Treatment

- Capacity 4.5 MGD
- Avg. Daily Flow = 1.6 MGD



Bellaire Citizens Academy

Water Capital Projects

- Feld Park water plant stand alone generator
- Hydrant rehabilitation and replacement program
- Water line improvement project
- Water Distribution Valve improvement



Bellaire Citizens Academy

Wastewater Capital Projects:

Collections

- Flow monitoring in sanitary sewers -> ID and prioritize rehabilitation
- Standalone Generator at Lift station facilities

Treatment

Ongoing assessment of treatment plant and lift station facilities -> ID and prioritize critical repair/replacement

Bellaire Citizens Academy

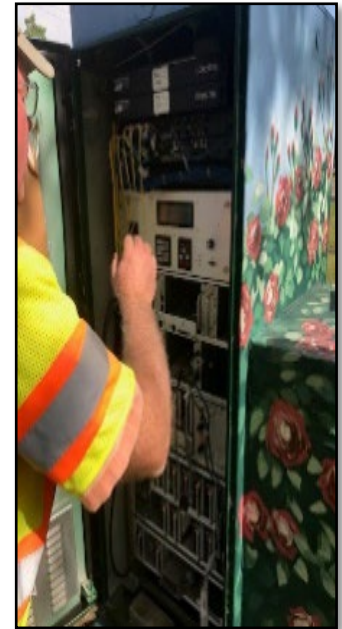
Streets & Drainage:

Roads

- 45 miles of road
- Street Sweeping

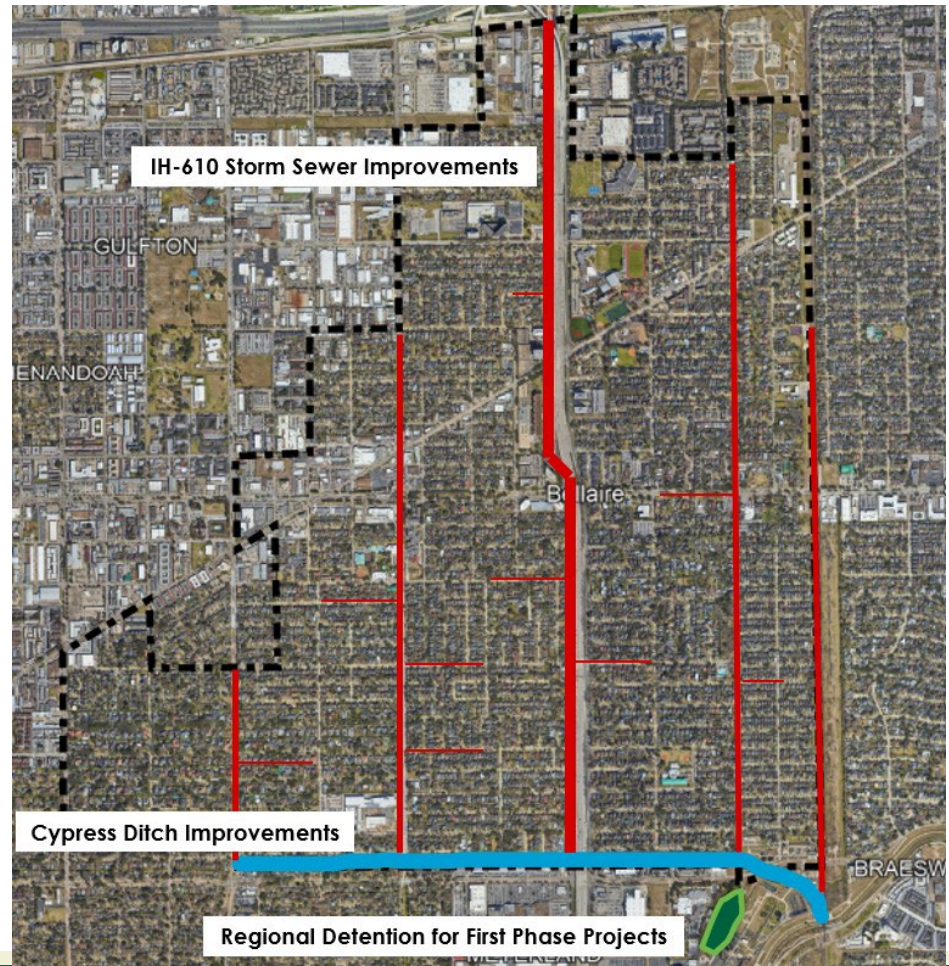
Storm Drains

- 49 miles of drainage pipe
- 1.32 miles of open ditch, creeks and/or canals



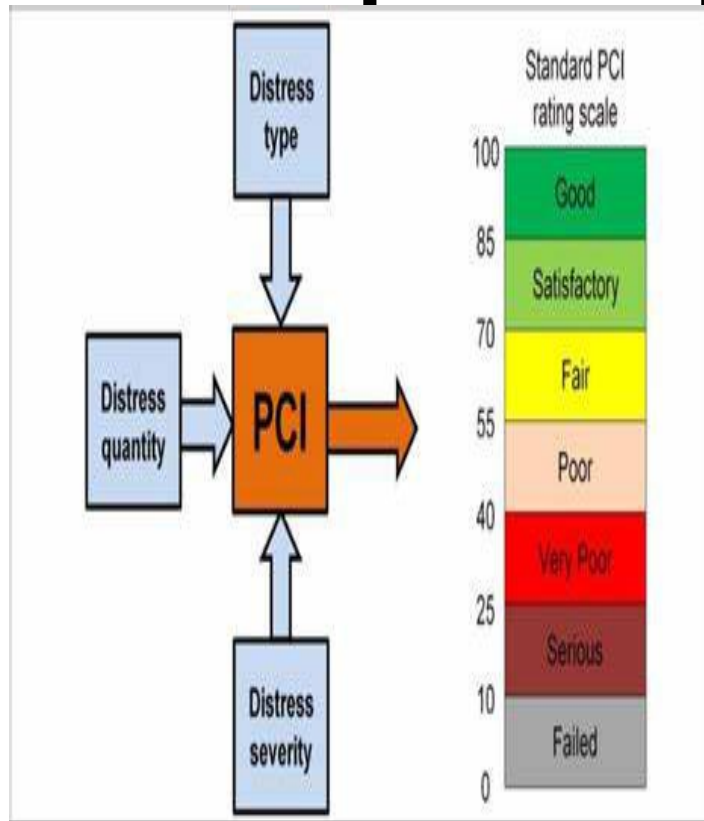
Bellaire Citizens Academy

Regional Drainage Improvements Program



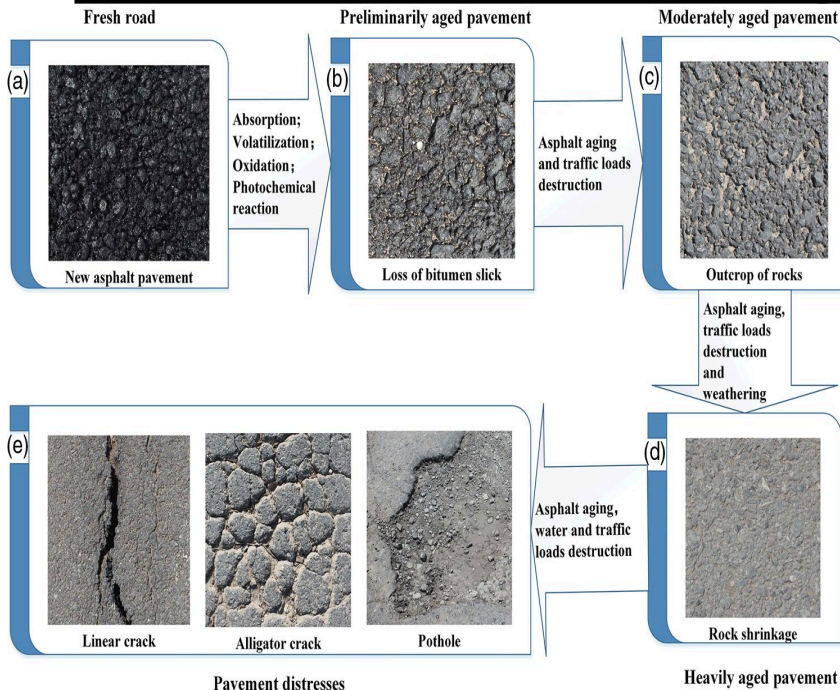
Bellaire Citizens Academy

Capital Improvement Projects

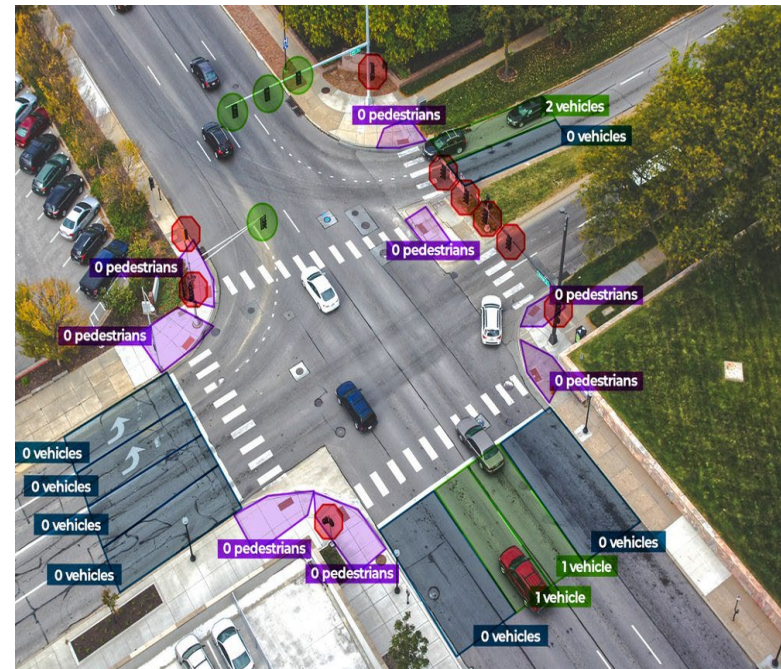


Bellaire Citizens Academy

Streets & Drainage Capital Projects:



Pavement Condition Assessment



Traffic Signal Optimization

Bellaire Citizens Academy

Streets and Drainage Operations:



Bellaire Citizens Academy

Streets and Drainage Operations:



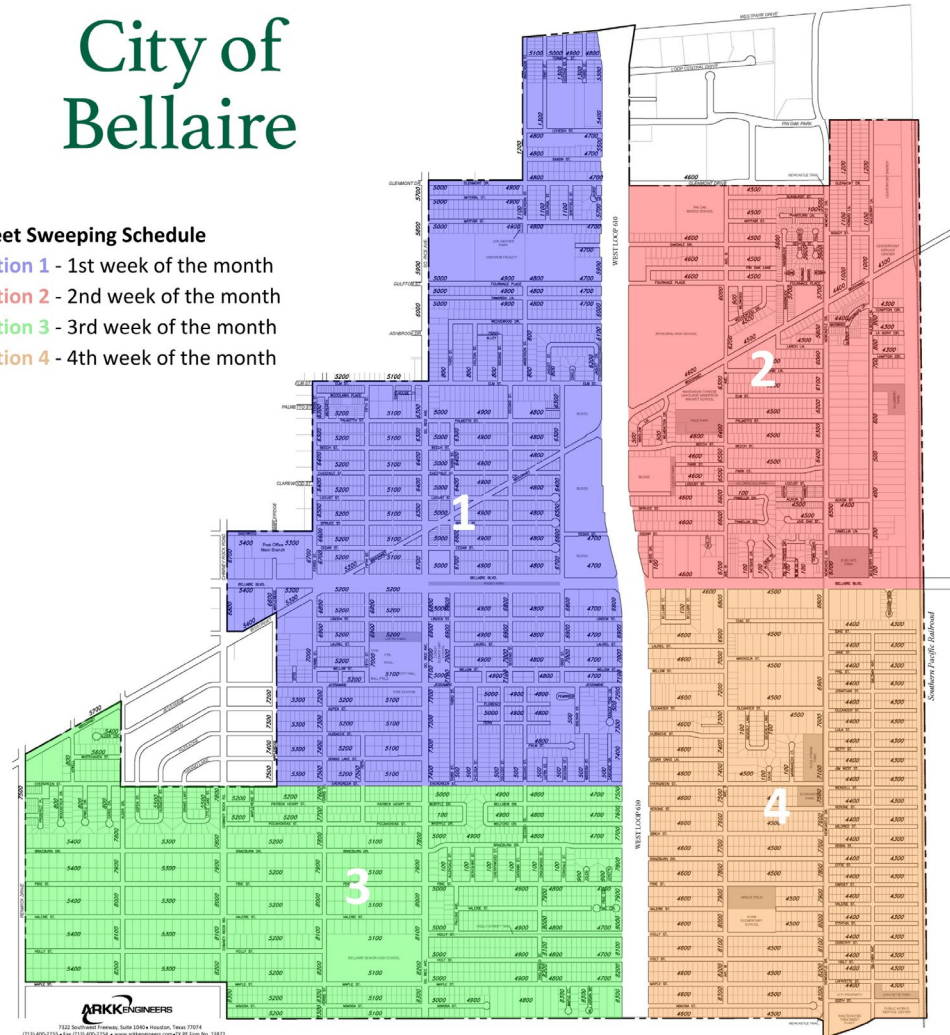
Bellaire Citizens Academy

Street Sweeping Program

City of Bellaire

Street Sweeping Schedule

- Section 1** - 1st week of the month
- Section 2** - 2nd week of the month
- Section 3** - 3rd week of the month
- Section 4** - 4th week of the month



2024

ARKK ENGINEERS

7325 Southwest Freeway, Suite 500 • Houston, Texas 77074
(713) 400-2735 • Fax (713) 400-2734 • www.arkkengineers.com • EIR File No. 10875

Bellaire Citizens Academy

Solid Waste / Recycling:

• Functions

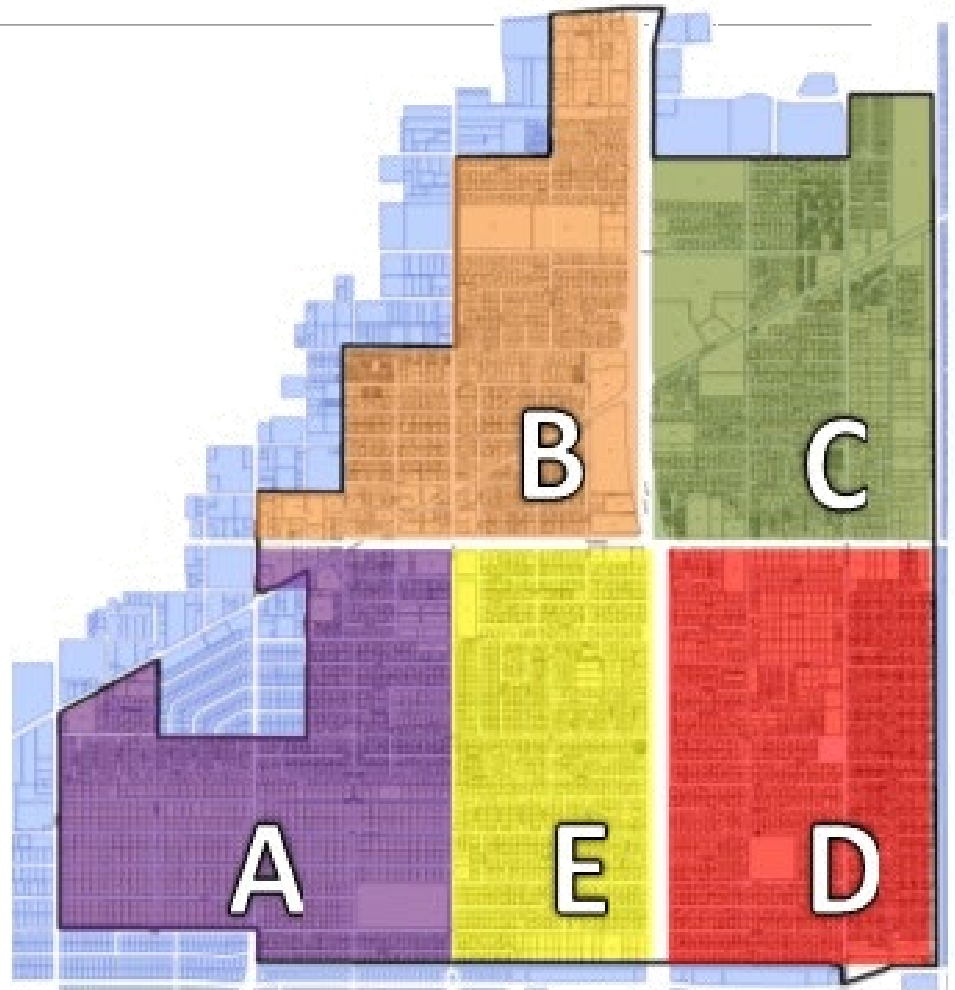
- Household Waste Collection
- Tree Limbs and Brush Collection
- Curbside Recycling Collection
- Street Sweeping

• Cost of Service Calendar Year

- Trash Hauling Jan.-Dec. 2024 - \$387,019.13
- Recycling Jan.-Dec. 2024 - \$22,614.21

• Levels of Service Provided

- Household Waste-Twice a Week
- Limbs/Brush & Recycling – Once a Week



Bellaire Collects App.



RECYCLE OFTEN:



Metal Cans

Steel, tin & aluminum soda, vegetable, fruit & tuna cans



Plastic Bottles & Containers #1-5 & 7



Paper

Brown paper bags, non-confidential office paper, newspaper, magazines



Paper Cardboard, Dairy & Juice Containers



Flattened Cardboard & Paperboard



Glass Bottles & Jars

RECYCLE RIGHT:

Things you can do to ensure quality material is recycled:



DO NOT INCLUDE: Food waste, plastic bags, or polystyrene foam cups & containers

Paper and cardboard must be dry and free of food debris.

Paper food containers must be rinsed out, no caps.

Tissues, paper towels or other paper that has been in contact with food is not acceptable.

Make sure food contamination and caps are removed from cans and plastics and all containers are empty.

Separate plastic lids from plastic bottles (often made from different materials)

Keep medical waste (syringes, needles) out of recycling containers or place in safe disposal containers like Waste Management's MedWaste Tracker® box.

